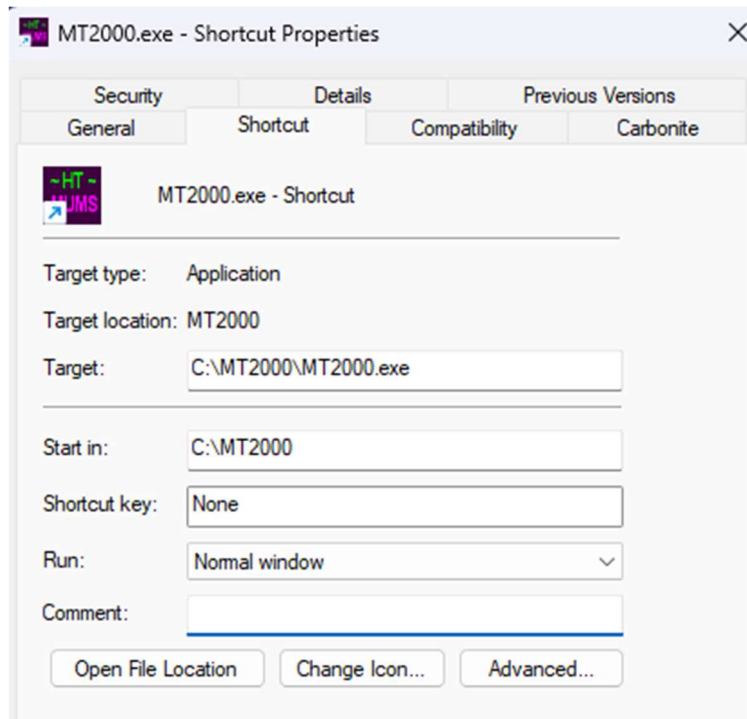
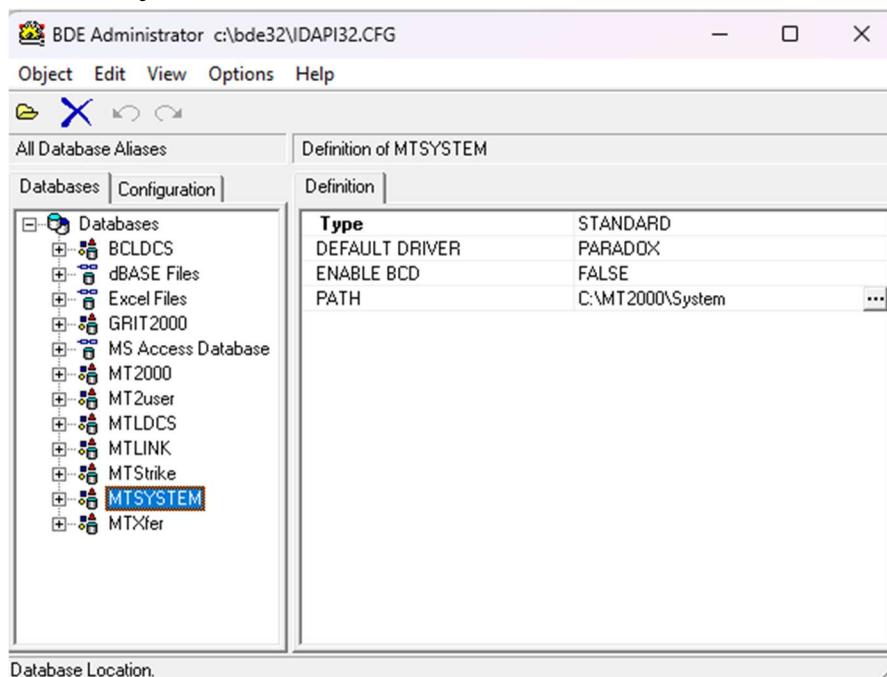


Normal MUMS Settings

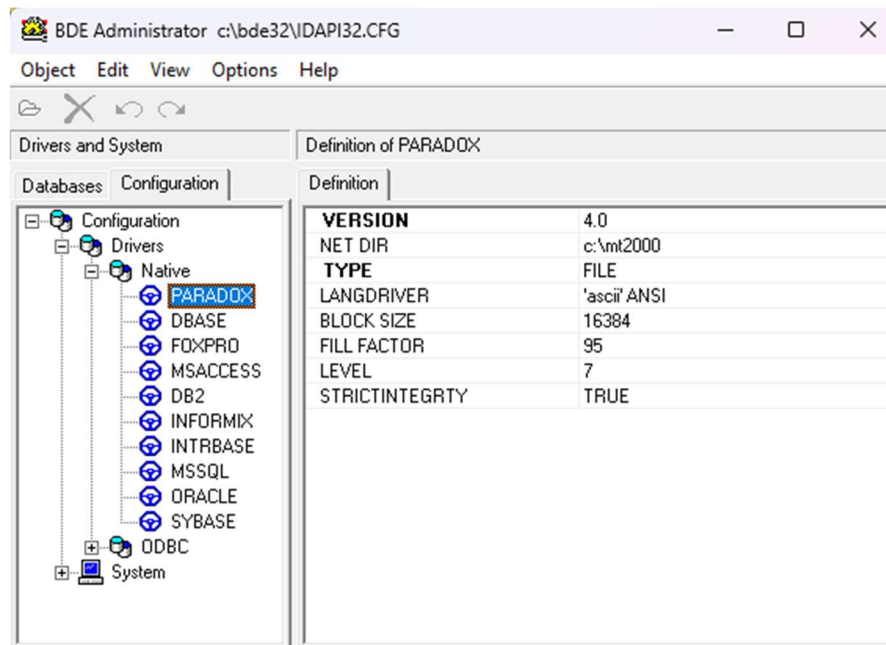
- **MUMS Desktop Shortcut for Single User & Network Workstations**
 - The following should be the properties of the MUMS Desktop shortcut



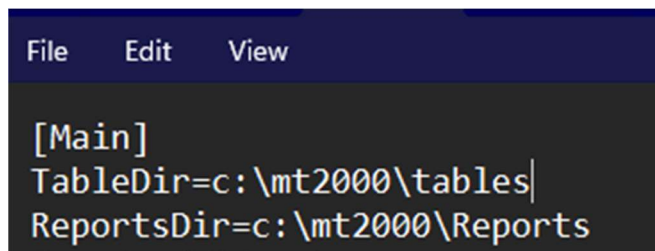
- **Borland Database Settings**
 - Need to run **BDEADMIN** program. This is normally found...
In C:\BDE32 folder
or C:\Program Files (x86)\Borland\Common Files\BDE
 - The following setting on the Database tab for MTSYSTEM must be pointing to C:\MT2000\System folder in the Path Field



- The following setting under Configuration Tab and Paradox setting for NETDIR should point to the folder above where your TABLES are located.



You can check on where your TABLES are located by opening up the C:\MT2000\MT2000.ini file and see the TableDir setting:



So based upon the above example the tables are in c:\mt2000\tables and the NET DIR in the Borland Database Engine (BDEADMIN) would be "c:\mt2000."

If your MUMS is a network workstation, your tables might be M:\tables or M:\mt2000\tables. Therefore your NET DIR would be "M:\\" for M:\mt2000". It is the location of the folder above Tables.

- BDEADMIN Notes:
 - Only click once on Paradox above. A double click will lock it and you cannot make changes.
 - After making any changes you need to click on another field then use the red X in top right corner to exit. Sometimes you have to click this a few times to exit.