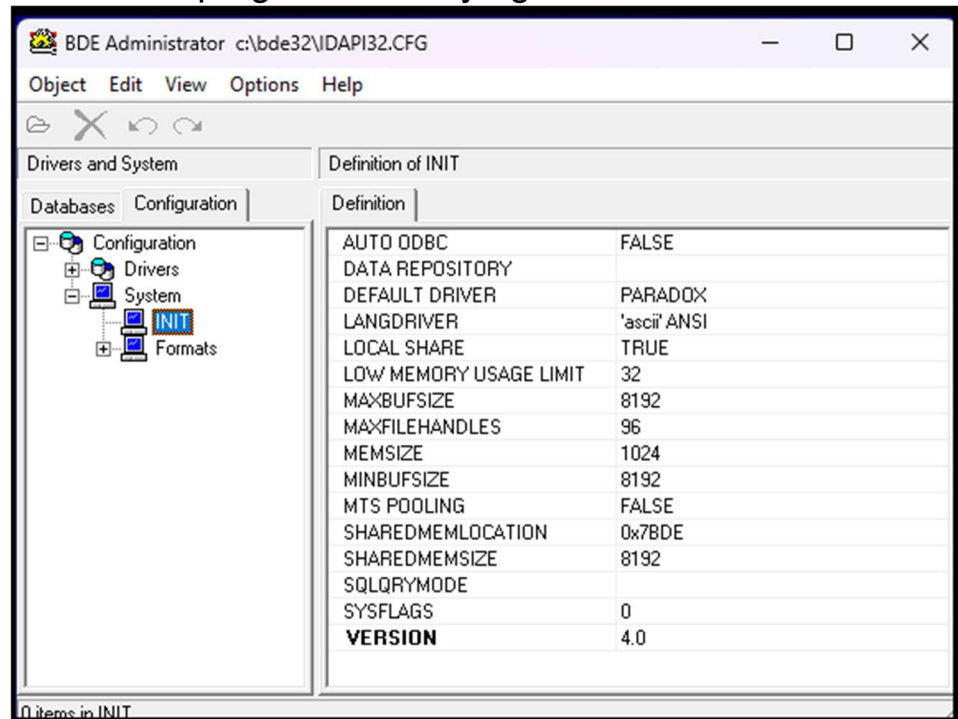


MUMS Does not Run from Desktop Shortcut

- **2501 Error (or other 2xxx errors)**

- Trying to run more than one MUMS related program.
- Solution: Exit all MUMS related programs and try again.
- If still issue, then the Borland Data Base Engine needs to be changed by running BDEADMIN as described below and changing the entries in the Configuration, System, INIT →
- After changing the entries double check that they got changed and re-boot the computer to have them take effect.



Alternate settings for computers with small memory:

SHARED MEMLOCATION: 0x5BDE, SHARED MEMSIZE: 4096

- Running **BDEADMIN** program. This is normally found...
In C:\BDE32 folder
or C:\Program Files (x86)\Borland\Common Files\BDE