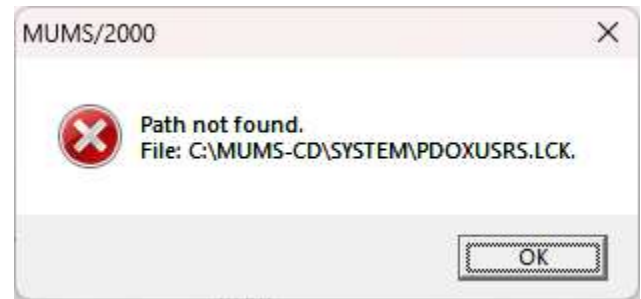


- **Path Not found for SYSTEM Folder**

- This is a result of NOT running MT2000 from the normal C:\MT2000 folder.



- Solution is to fix the Borland Database Engine entry for MTSYSTEM.
- Need to run **BDEADMIN** program. This is normally found...
In C:\BDE32 folder
or C:\Program Files (x86)\Borland\Common Files\BDE

- Click on “Databases”
- Click on “MTSYSTEM”
- Change “Path” to be “C:\mt2000\System”
 - Click on any field above Path then use the X on top right to exit. See note below if having any exit issues. Yes to save changes. Ok to start programs over.

