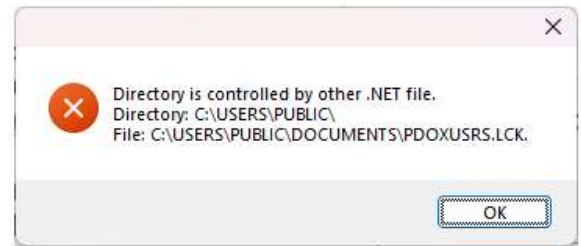


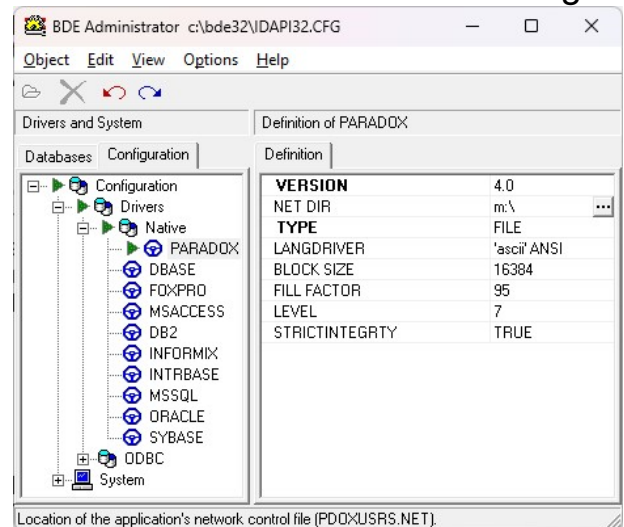
- **Directory controlled by other .NET**

- Issue is settings in the BDEADMIN on all workstations is not same.



- Solution: run BDEADMIN program from location above to check or change.

- Click on "Configuration"
- Double Click on "Drivers"
- Double Click on "Native"
- Click on "Paradox"
- Check or change "NETDIR" to be where your shared MT2000 folder is. This should be the folder above your Tables.
- Click on any field below NETDIR and use X in top right to exit and save changes.



- Note: Might have to delete any ".LCK" files if still get the error
- Note: If this still does not work use M:\Tables as the NET DIR setting.